

WASHINGTON TOWNSHIP OFFICIAL ZONING MAP

SECTION 4. Effective Date. This Ordinance shall become effective on the fifth day following enactment.

ENACTED this 4 day of April 2017.

Attest:

[Signature]
Secretary

WASHINGTON TOWNSHIP COUNCIL

By *[Signature]*
Mayor









By *[Signature]*
Vice-Mayor

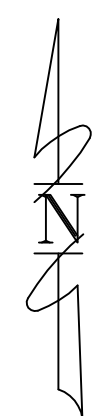
By *[Signature]*
Councilperson

By *[Signature]*
Councilperson

By *[Signature]*
Councilperson

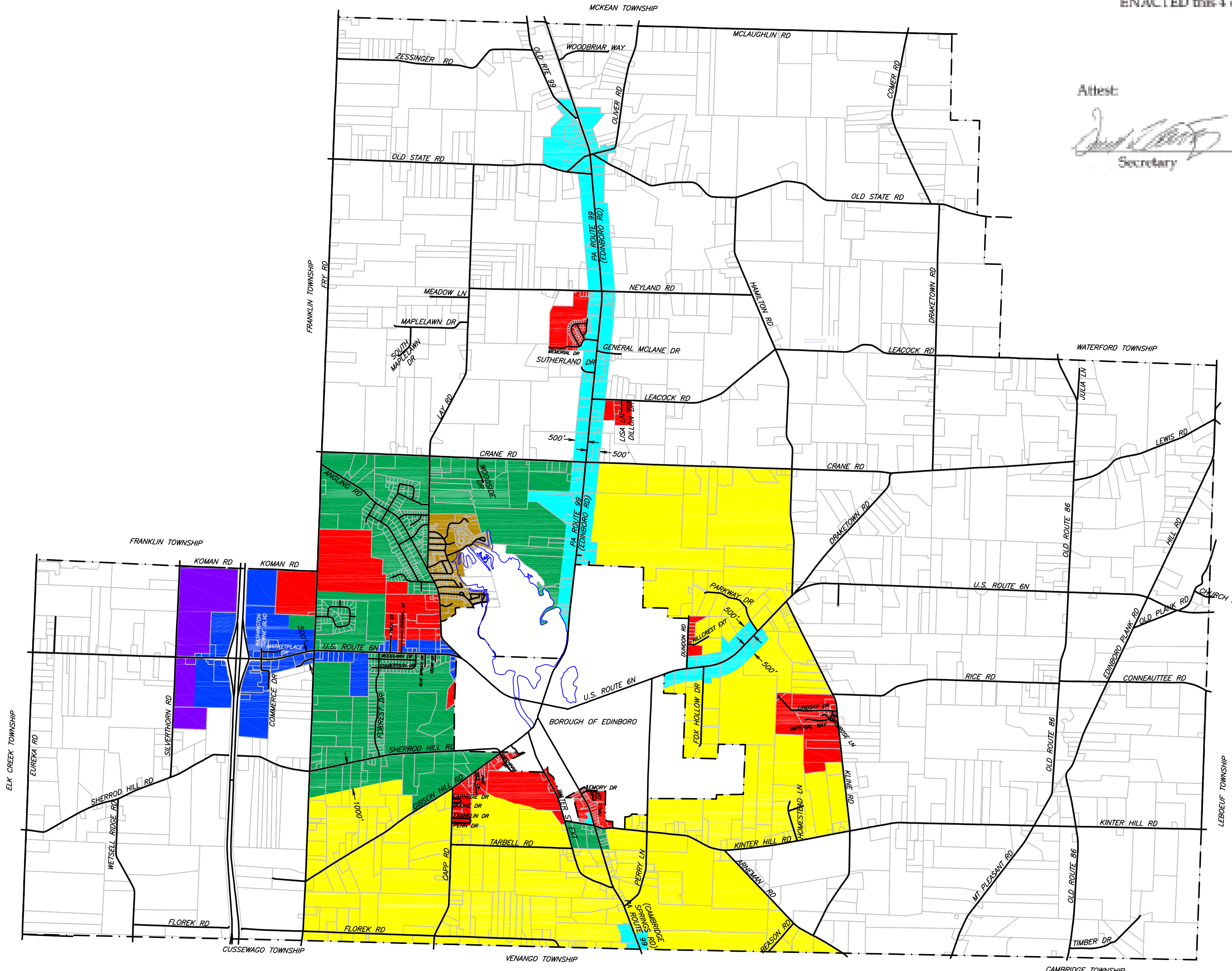
LEGEND

-  A-1 AGRICULTURAL
-  I-1 INDUSTRIAL
-  C-1 COMMERCIAL
-  B-1 BUSINESS
-  R-1 RESIDENTIAL
-  R-2 RESIDENTIAL
-  R-3 RESIDENTIAL
-  RC-1 RURAL CONSERVATION



NOTE: ZONING DISTRICT BOUNDARY OFFSET DISTANCES FROM A ROADWAY ARE MEASURED FROM THE ROAD RIGHT-OF-WAY LINE.

SCALE: 0 3000 6000 feet



2/7/18	CARDINAL LN R-2 TO C-1	NW
4/4/17	LOVETTS R-2 CHANGE APPROVED BY COUNCIL	NW
DATE	REVISION	BY